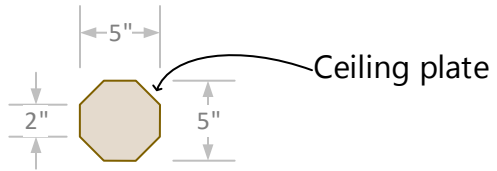
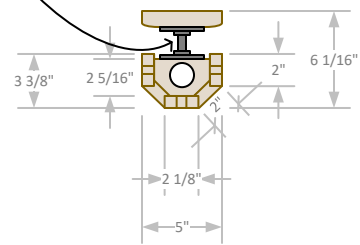


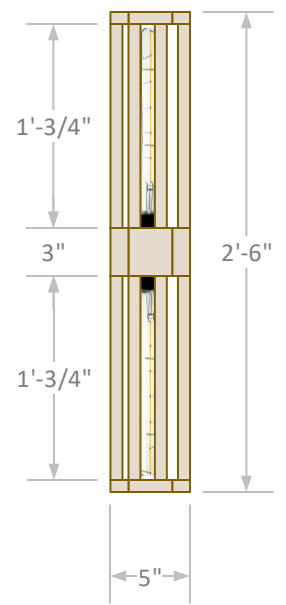
1/2" threaded pipe
 1-1/2" long

Top View

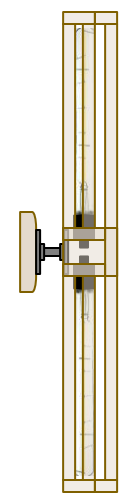


Ceiling plate

Front View



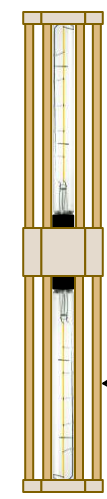
Side View



Canopy Kit



1/2" copper verticals
 instead of barnwood



All Parts to be made with
 3/4" barnwood (except
 ceiling plate Tubes)

24-3-0701BS30N
 Overall Dimensions: 5"w x 6"d x 30"h
 Approx. Weight: 5lbs.
 Hardware/Fasteners: **Canopy kit**
 Finish: **Natural/Waxed**
 Packaging: **Burlap/Paper/Cardboard Box**